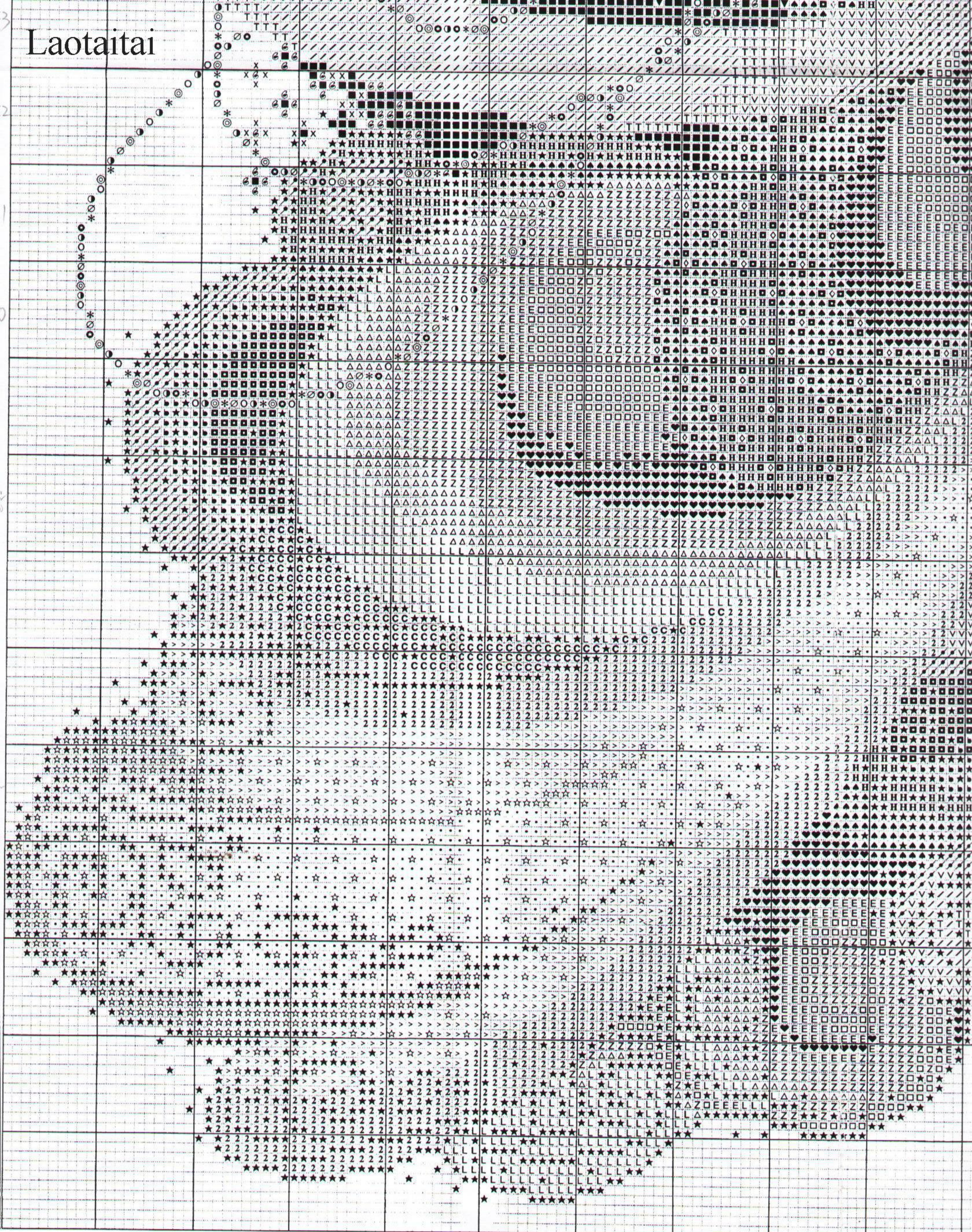
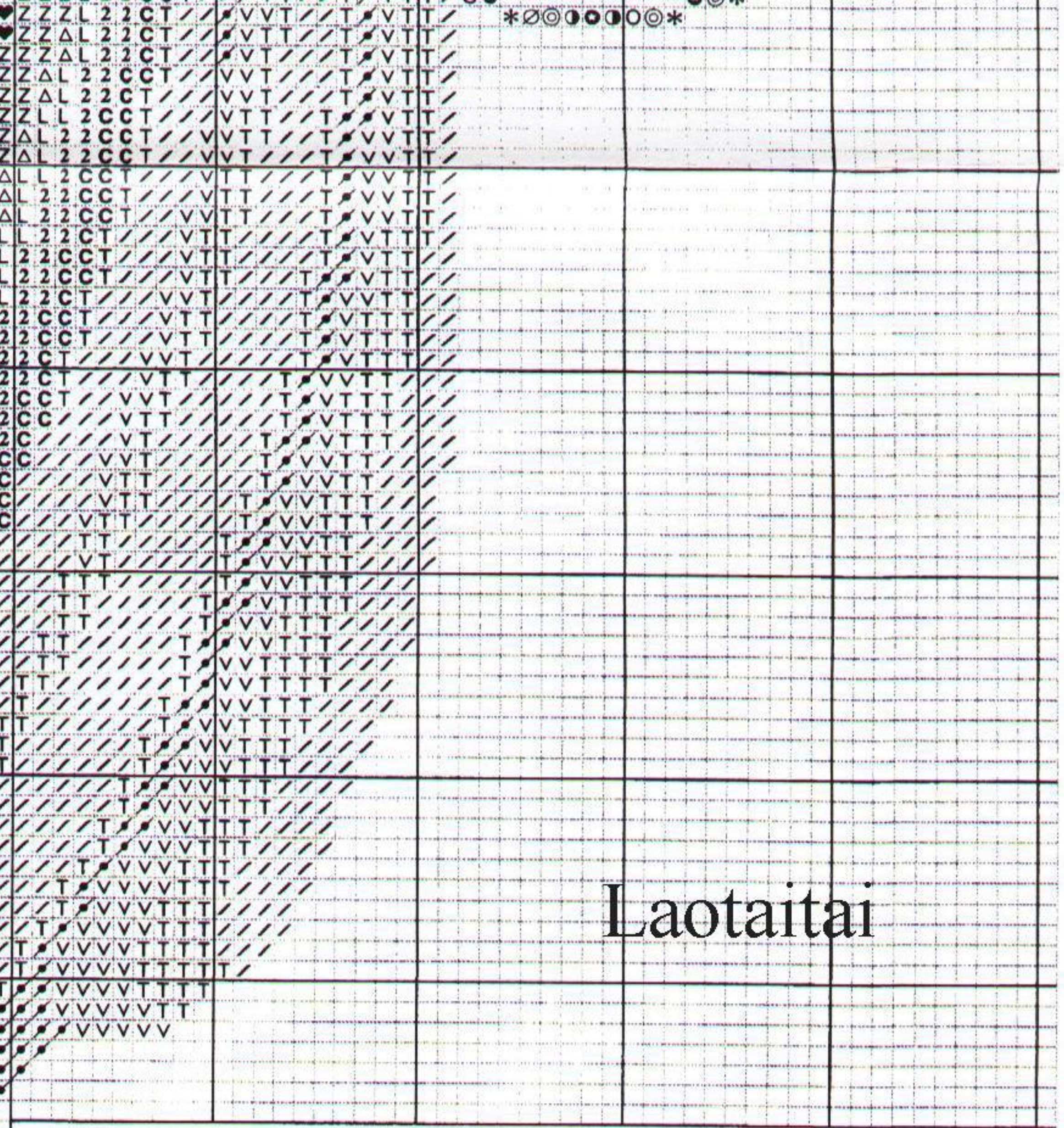
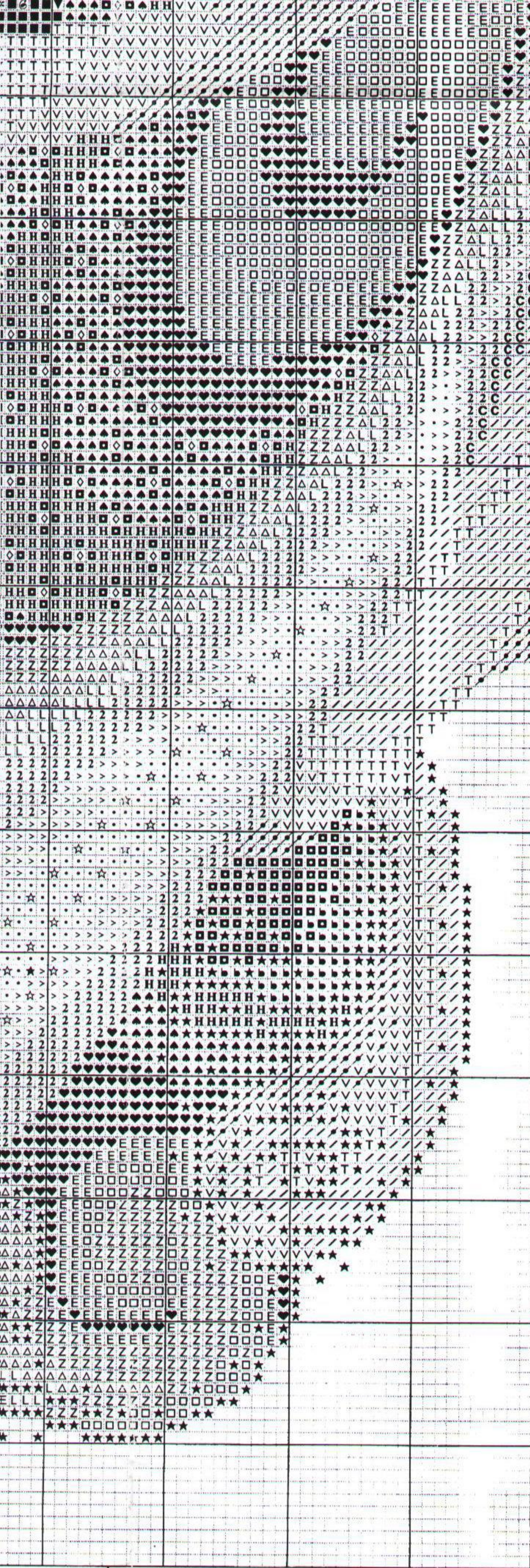


Laotaitai





Laotaitai


Stitching Instructions

- Design is stitched using 2 strands of floss over 2 threads of linen.
 - "over 1" face is stitched using 1 strand of floss over 1 thread of linen.
 - "over 2" face is stitched using 2 strands of floss over 2 threads of linen.
- Backstitch**
- Corner in #8 Braid 001
- Backstitch for "over 2" face**
- Eye lids, eye brows, and lips in 632
 - Eye lashes in 898
 - Chin and nose in 3772

Lavender & Lace

Told in a Garden
P.O. Box 417
Kennebunk, ME 04043

"Fairy Dreams" by Marilyn Leavitt-Imblum
Copyright ©1996 Told in a Garden.
all rights reserved.

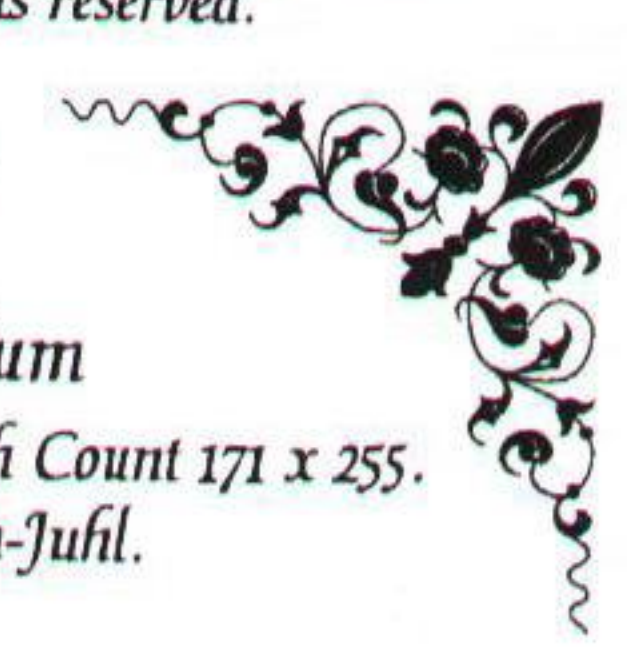


夢幻の仙女 L&L 41

"Fairy Dreams"

designed by Marilyn Leavitt-Imblum

Stitched on 28 count Dusty Green Linen (2 over 2). Stitch Count 171 x 255.
Design area 12¼" x 18¼". Frame 491CW from Larson-Juhl.
Fabric from Wichelt Imports.



DMC	● 839	■ 934 (3)	⌘ 3371	U 3768
●E 315	■ 898	● 936	□ 3726	- 3770
Z 316	♥ 902	X 937	△ 3727	◆ 3772
6 433	▼ 924	▲ 938	♣ 3733	N 3773
♡ 434	S 926	U 950	♠ 3740 (2)	+ 3774
I 470	= 927	H 3041	3 3743	◆ 3803
P 632	✕ 930 (2)	● 3042	∇ 3752	818 +
✓ L 778	● 931	B 3064	✓ T 3753	2 3354
> 818 (3)	✂ 932	C 3354 (2)	✓ / 3756 (2)	• B5200

() indicates number needed.

Mill Hill Beads from Gay Bowles Sales

* 02010 (104)	○ 02024 (100)	⊗ 03027 (101)
4.25 ○ 62012 (94)	◎ 62033 (99)	⊘ 62046 (92)

#8 Braid from Kreinik Manufacturing

★ 001 (3)	◇ 007	☆ 032 (2)
-----------	-------	-----------

